

**THE GATEWAY
TO
WEEHAWKEN**

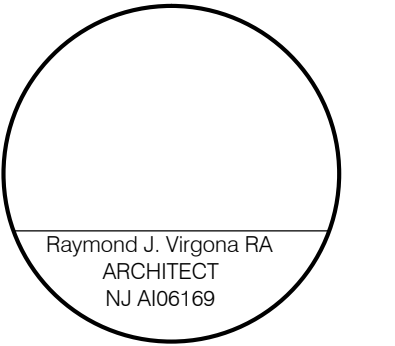
Willow Avenue and 18th
Weehawken, New Jersey

Owner / Applicant

**EAGLE ROCK GROUP,
LLC**

**VIRGONA
+
VIRGONA**
ARCHITECTS / PLANNERS

115 RIVER ROAD SUITE 1031
EDGEWATER, NEW JERSEY 07020



Consultants

This drawing is the property of Virgona & Virgona Architects. Any unauthorized use or reproduction of this drawing without the written consent of the Architect will be prosecuted to the fullest extent allowed under all applicable copyright laws.

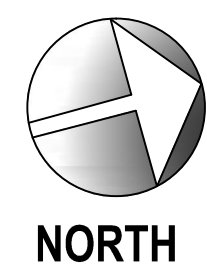
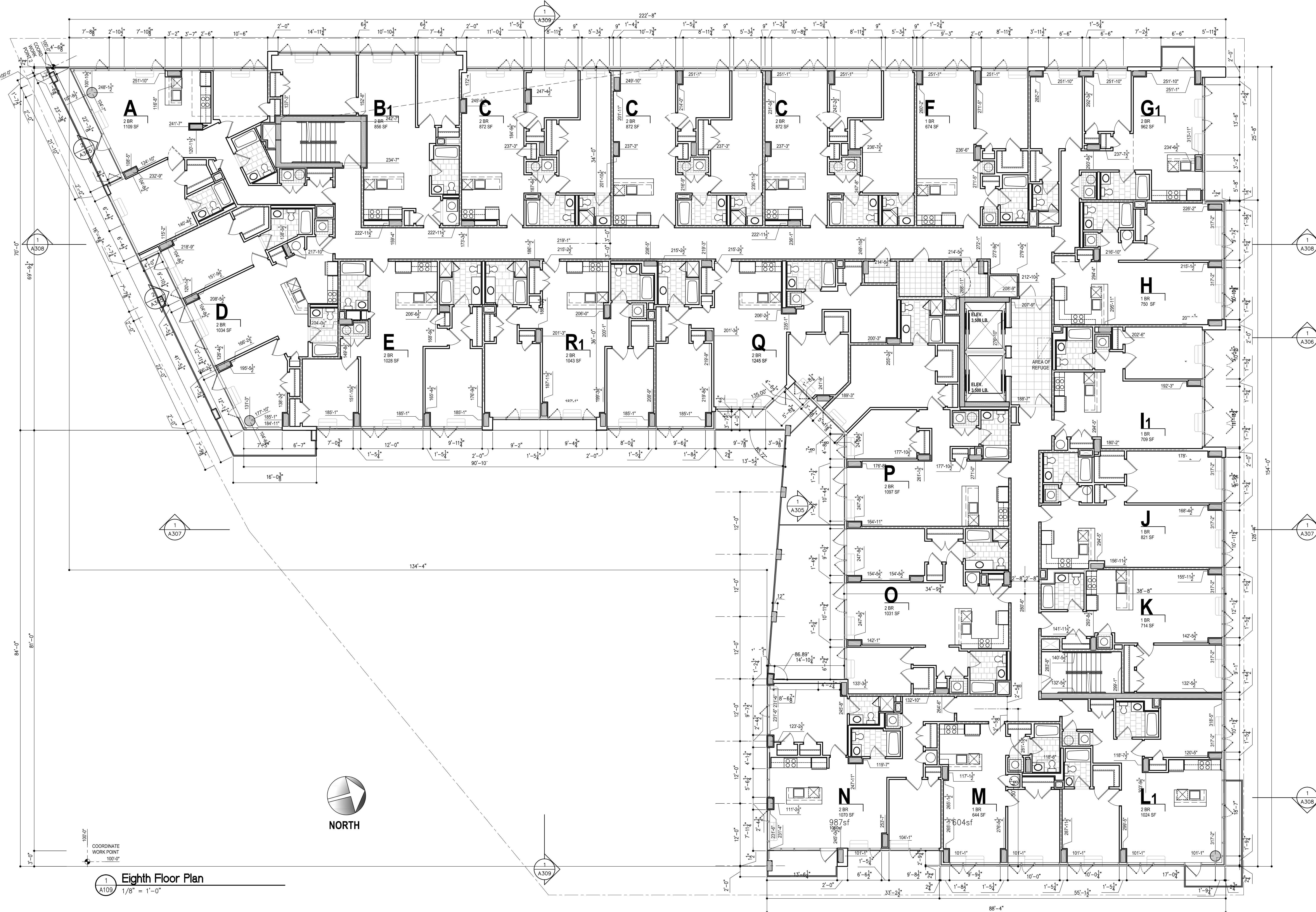
Revisions

Contents

EIGHTH FLOOR PLAN

Dwn.	
Crkd.	
Date	28 DECEMBER 2012
Scale	AS NOTED
Job No.	1219

Dwg. No. **A-109**



COORDINATE
WORK POINT
100'-0"

1 Eighth Floor Plan
1/8" = 1'-0"

A109

A309

A308

A307

A306

A306