

THE GATEWAY TO WEEHAWKEN

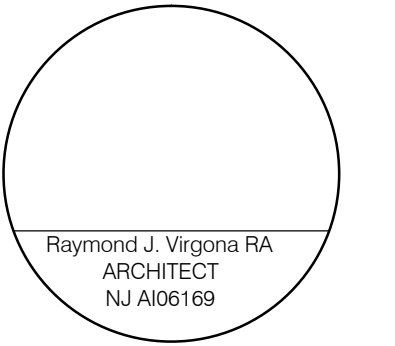
Willow Avenue and 18th Weehawken, New Jersey

Owner/Applicant

EAGLE ROCK GROUP, LLC

VIRGONA + VIRGONA
ARCHITECTS / PLANNERS

115 RIVER ROAD SUITE 1031
EDGEWATER, NEW JERSEY 07020



Consultants

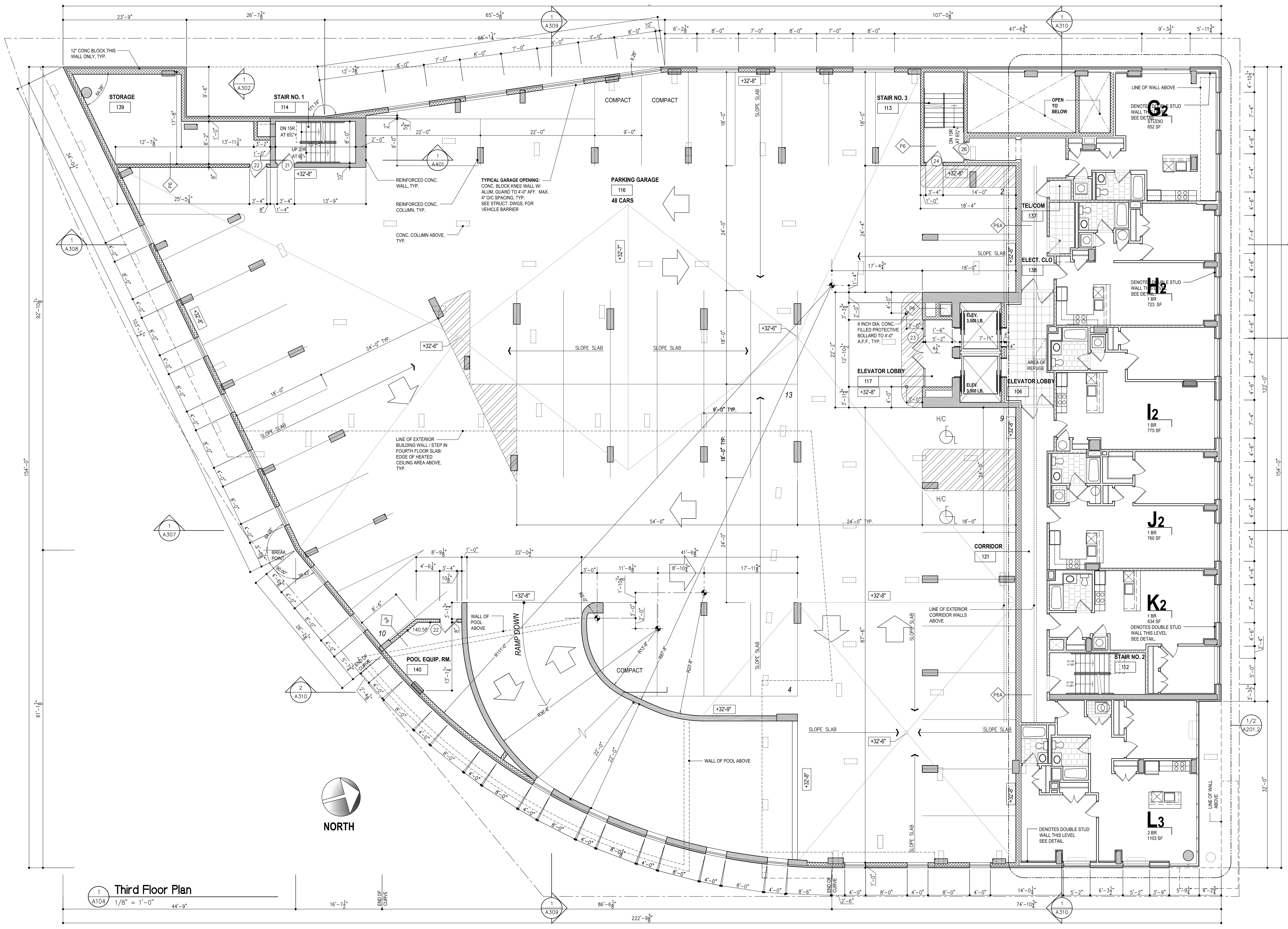
This drawing is the property of Virgona & Virgona Architects. Any unauthorized use or reproduction of this drawing without the written consent of the Architect will be prosecuted to the fullest extent allowed under all applicable copyright laws.

Revisions

Contents

THIRD FLOOR PLAN

Dwn.	
Chkd.	
Date	28 DECEMBER 2012
Scale	AS NOTED
Job No.	
Dwg No.	A-104



Third Floor Plan
1/8" = 1'-0"
44'-9"